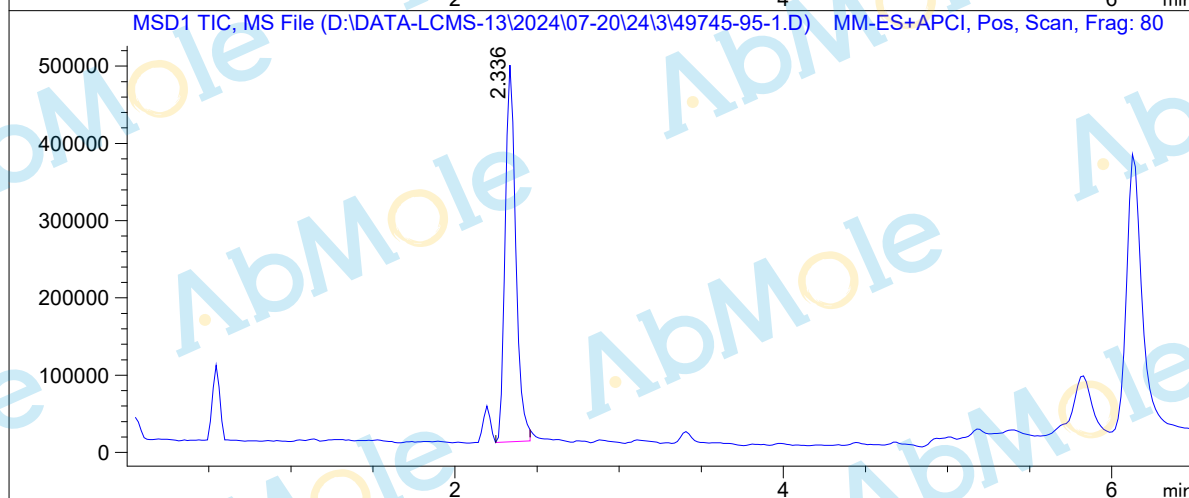
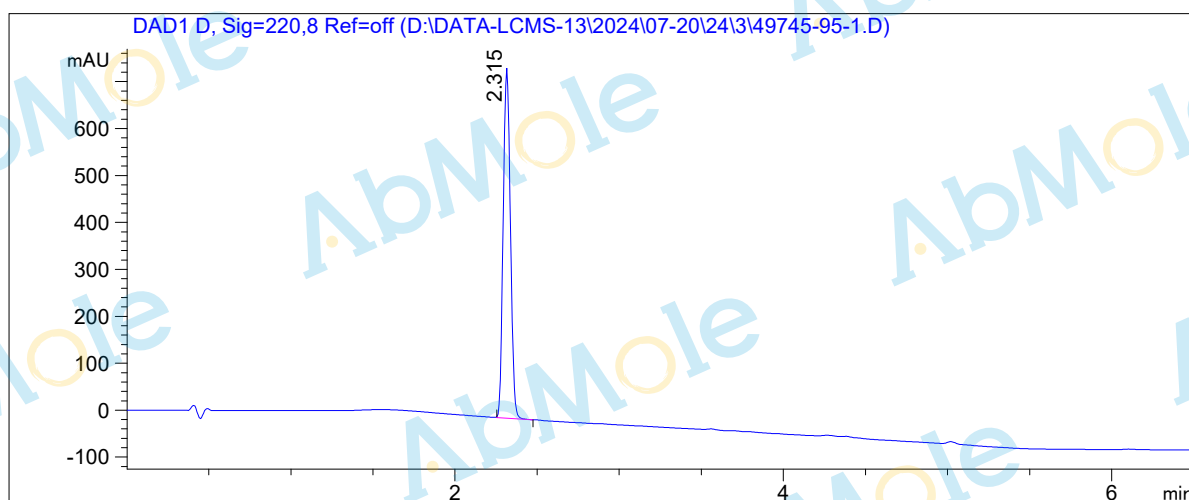


LCMS Report

Sample Name : M7743-Dobutamine hydrochloride-01
Data File : D:\DATA-LCMS-13\2024\07-20\24\3\49745-95-1.D
Injection Date : Thu, 25. Jul. 2024 Inj. Vol. : 2ul
Acq Operator : LCMS-13 Location : Vial 22
Acq. Method : D:\data-lcms-13\2024\07-20\24\3\P-05-95-TFA.M
Method Info. : column:Xbridge C18 5um 4.6*50mm ;mobile phase:B (ACN)
A(0.05%TFA) ; gradient(B%)!as Acq.Method above



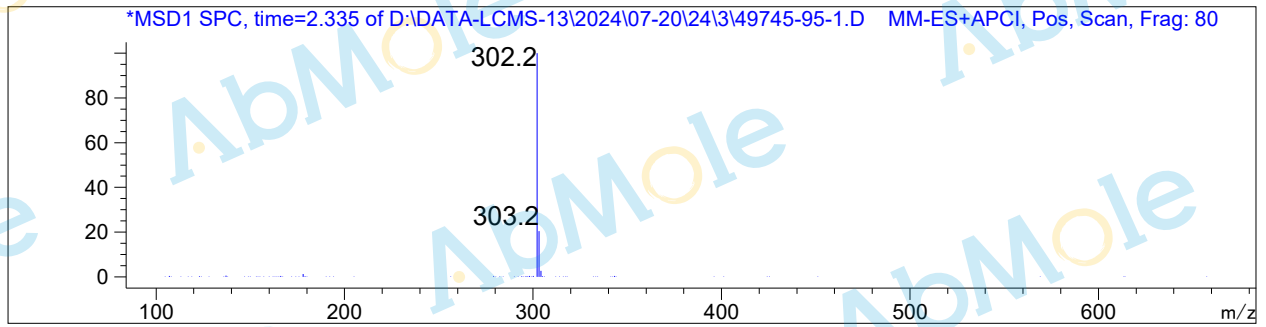
Integration Results

Signal 1: DAD1 D, Sig=220,8 Ref=off

#	R.T.	Type	Height	Height%	Width	Area	Area %
1	2.315	BB	745.763	100.000	0.050	2282.258	100.000

Signal 2: MSD1 TIC, MS File

#	R.T.	Type	Height	Height%	Width	Area	Area %
1	2.336	VB	487790.219	100.000	0.068	2.194e+006	100.000



*** End of Report ***